

ScreenShots from *Vx Acquisition System* and Finnigan Magnum ion trap:

Page 2 Mass axis calibration with FC-43

Page 3 Instrument setpoint tuning with FC-43

Page 4 Air and water peaks with AGC-Off.

Page 5 TIC and spectrum feedback windows.

Supelco non-polar test mixture (47300-U) with
5ng per component.

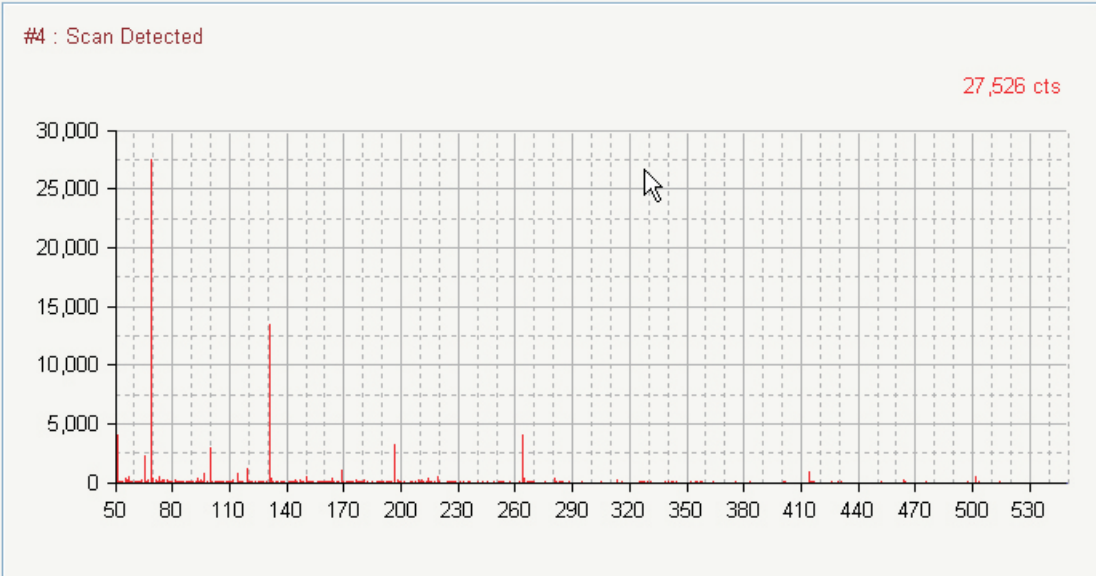
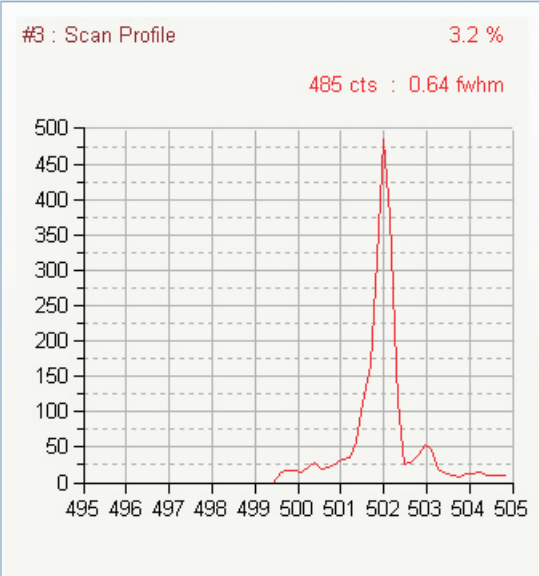
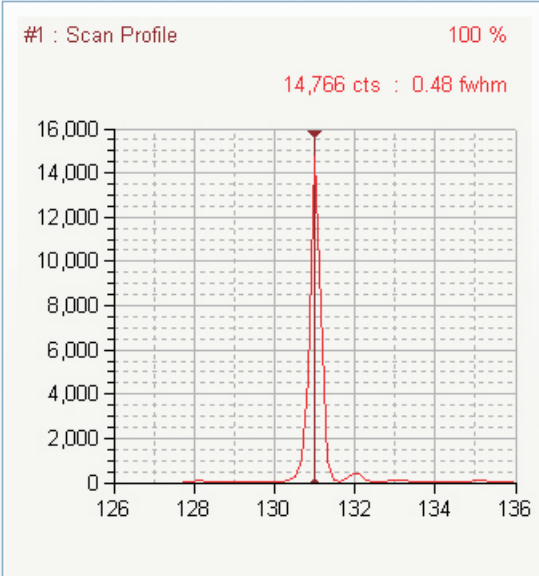
1 μ L splitless injection.

28 found at 28
69 found at 69
131 found at 131
219 found at 219
414 found at 414
502 found at 502
614 found at 614



131 found at 131 + -

Clear All Calibrate



Action

Tune

Calibrate

Ramp

Mode

Scan

Gain

Off

Channels

Show

Scan 1

Scan 2

Scan 3

Scan 4

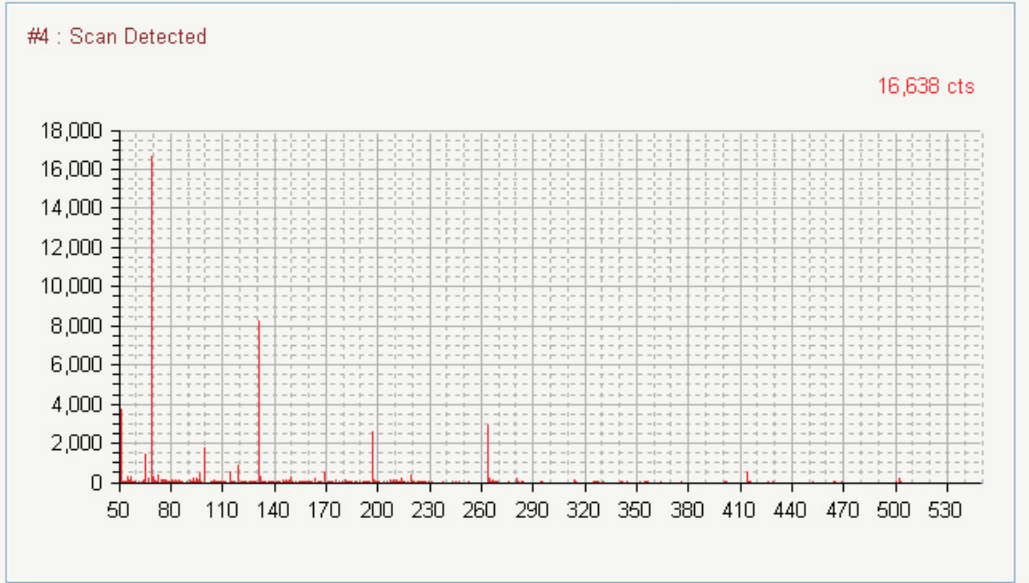
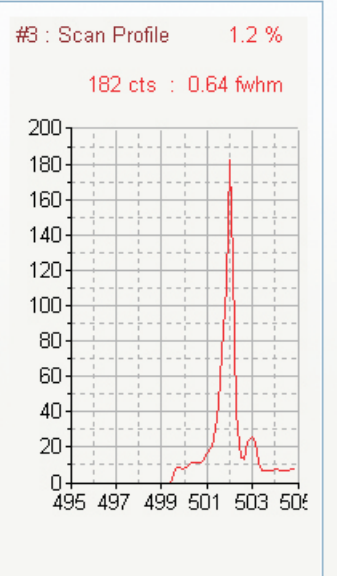
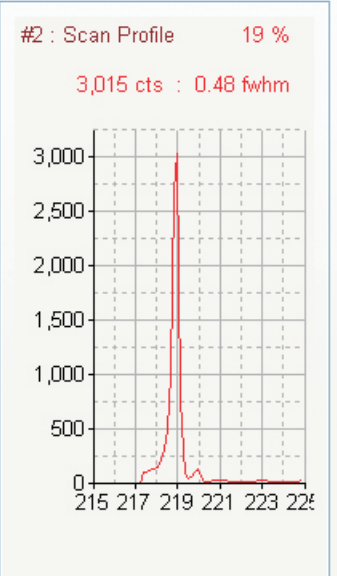
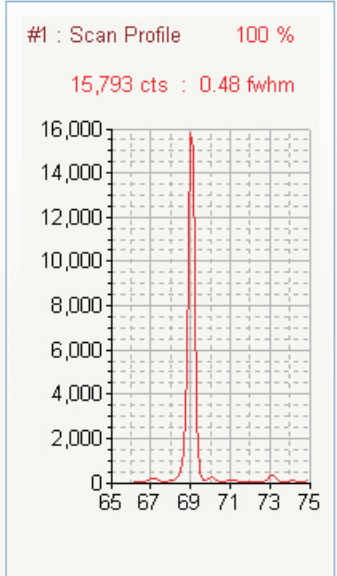


Setpoint	Value	Un
Init_Calibration		
CalGas_Open	Open	
EM_Enable	Enable	
Filament_Enable	Enable	
RF_Enable	Enable	
Cl_Gas_Wait	500 ms	
Cl_Gas_Open	Closed	
OneScan_Enable	Off	
Init_IonTrap		
EM_Voltage	2000 V	
Emission_Current	25 μ A	
Filament_Select	AutoSelect	
Axial_Voltage	3500 mV	
PeakThreshold	2 cts	
PeakSensitivity	0.4	
PeakRadius	3	
PeakOrder	Cubic	
PeakScaling	TIC/3	
Init_Signals		
Init_CalScan		

Filament_Enable

Off

Enable



- Action
- Tune
 - Calibrate
 - Ramp

- Mode
- Scan
 - Gain
 - Off
 - Channels

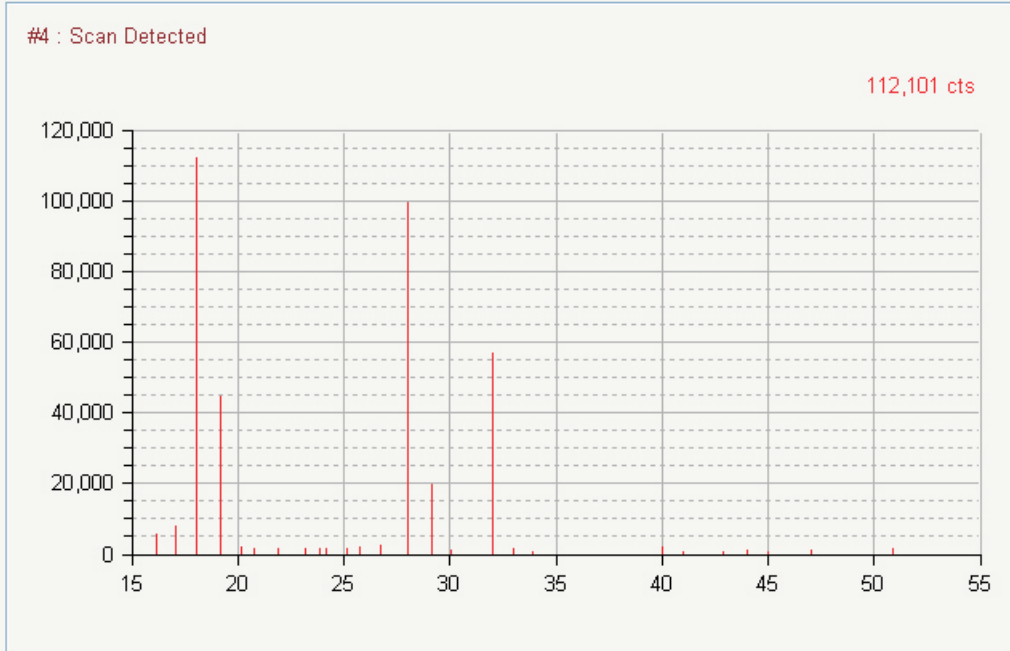
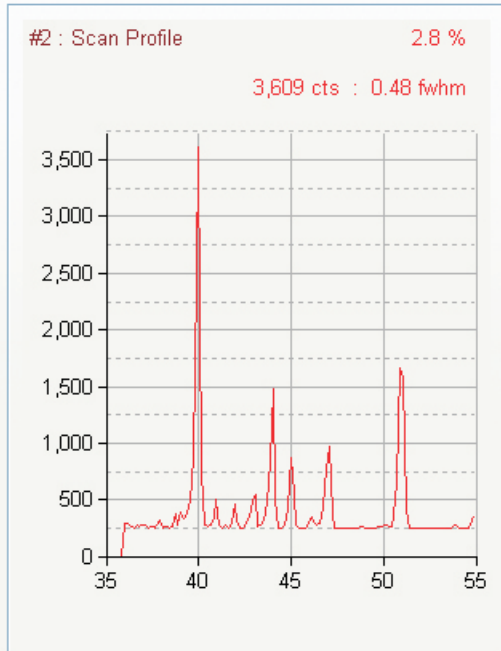
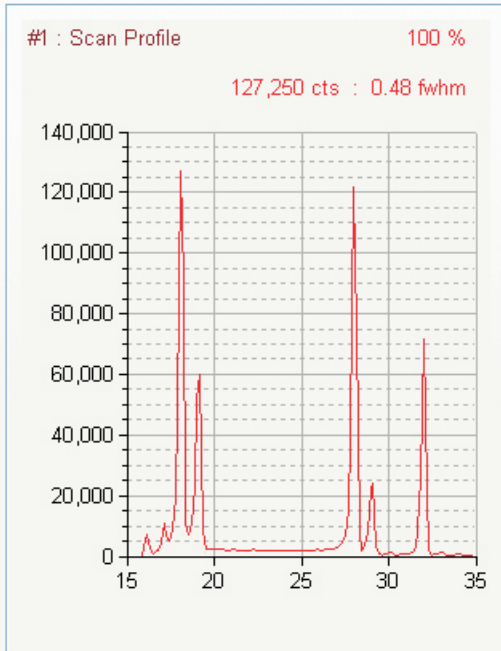
- Show
- Scan 1
 - Scan 2
 - Scan 3
 - Scan 4



Setpoint	Value	Un
[-] Init_Calibration		
CalGas_Open	Closed	
EM_Enable	Enable	
Filament_Enable	Enable	
RF_Enable	Enable	
Cl_Gas_Wait	500 ms	
Cl_Gas_Open	Closed	
OneScan_Enable	Off	
[-] Init_IonTrap		
EM_Voltage	1800 V	
Emission_Current	25 μ A	
Filament_Select	AutoSelect	
Axial_Voltage	3500 mV	
PeakThreshold	2 cts	
PeakSensitivity	0.4	
PeakRadius	3	
PeakOrder	Cubic	
PeakScaling	TIC/3	
[+] Init_Signals		
[-] Init_CalScan		
Ion_Mode	EI	
EI_Mode	AGC Off	
Cl_Mode	ARC On	

EI_Mode	
<input type="radio"/>	AGC On
<input checked="" type="radio"/>	AGC Off

Automatic Gain Control



Action

- Tune
- Calibrate
- Ramp

Mode

- Scan
- Gain
- Off
- Channels

Show

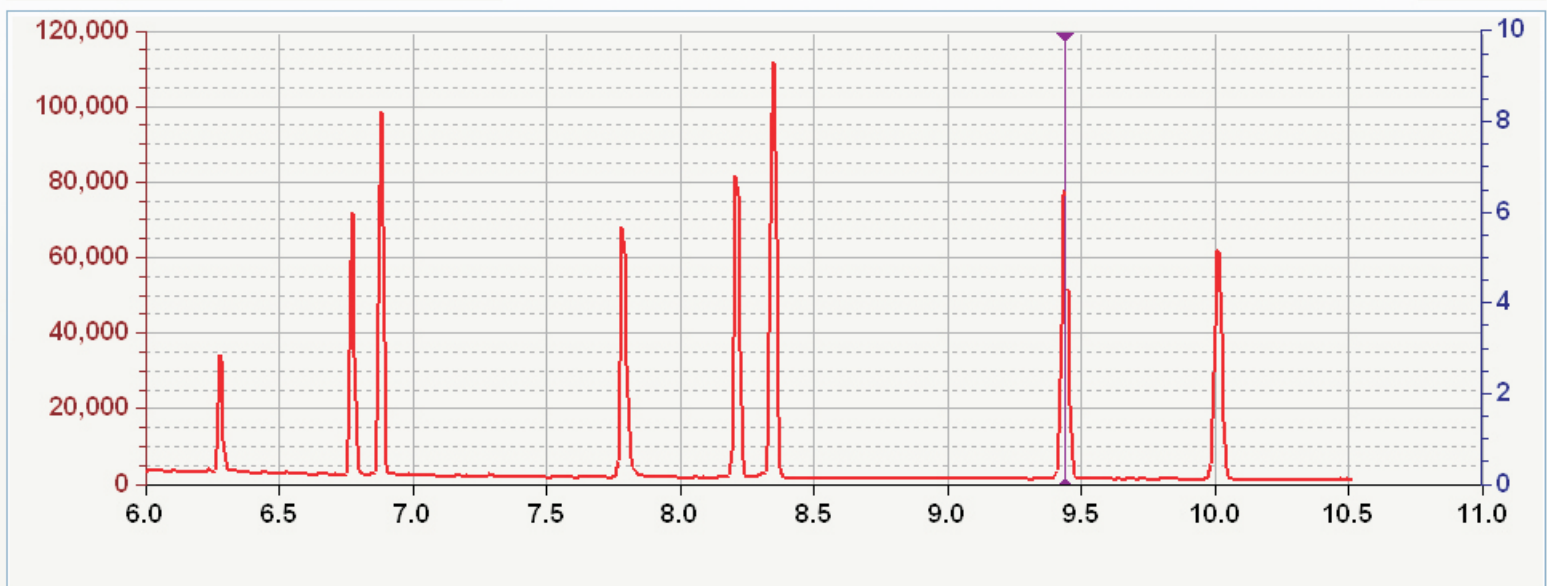
- Scan 1
- Scan 2
- Scan 3
- Scan 4



Chromatogram Instrument Status

File : Supelco\NonPolarTestMix.Tkf

Vial # : 1



Display

- All
- Last 5
- Last 10

Auto Scale

- Normalize
- Extremes

Show

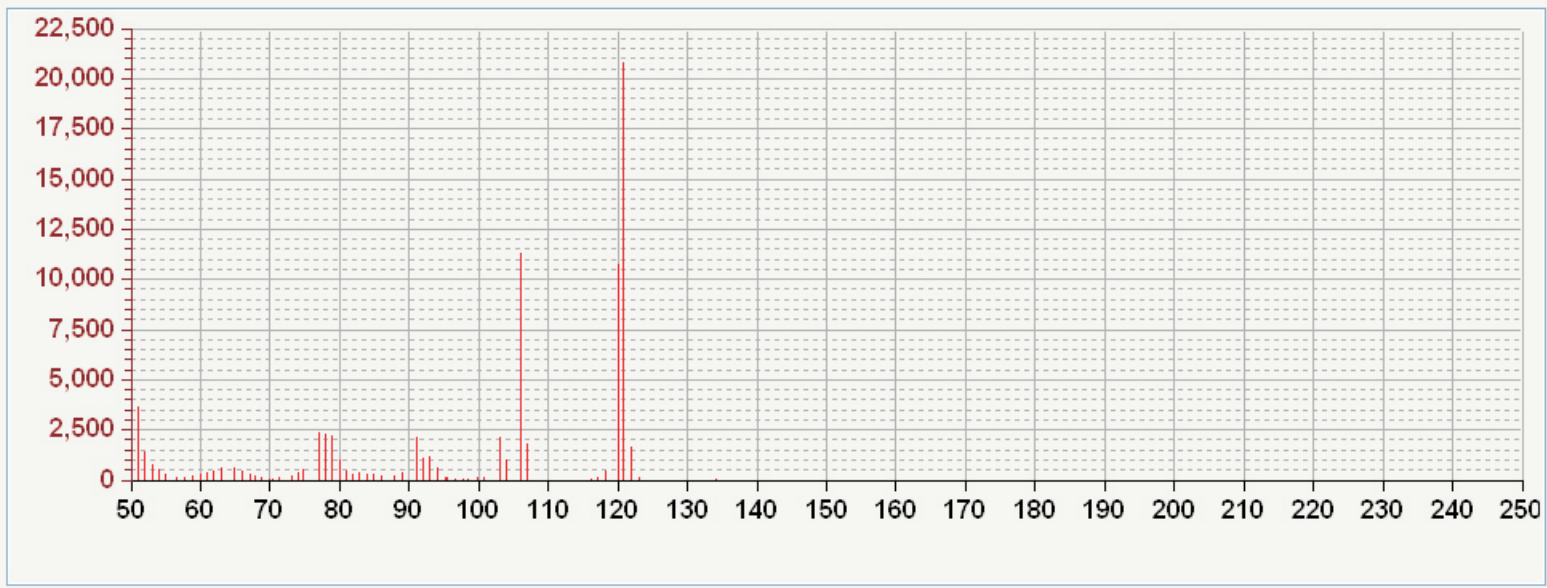
- TIC
- Ion #1 :
- Ion #2 :
- Ion #3 :
- Ion #4 :
- Spectrum

Ion Scale

- Ion #1
- Ion #2
- Ion #3
- Ion #4
- Ions #1 #2 #3 #4

Scan # : 923 at 9.44 minutes

20,813 cts



Spectrum

Time :

Scan :

Navigation icons: back, forward, first, last

Method Tune Feedback